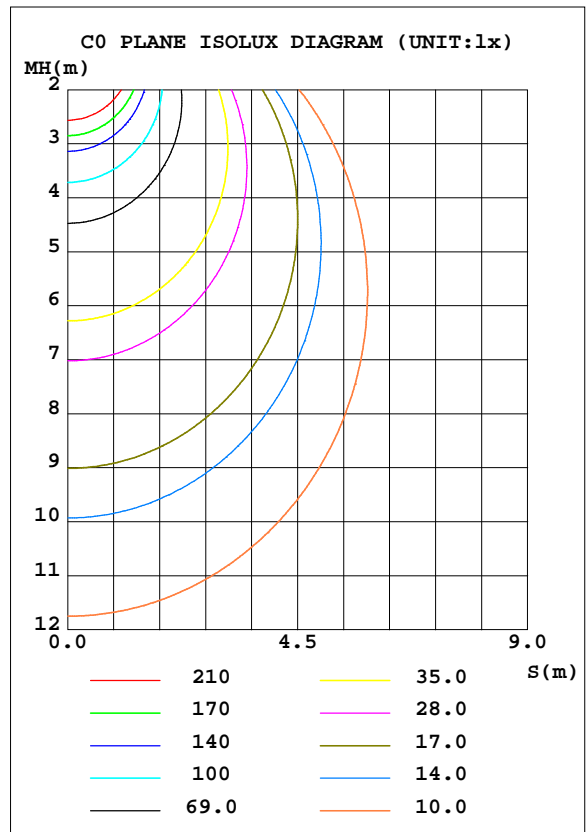
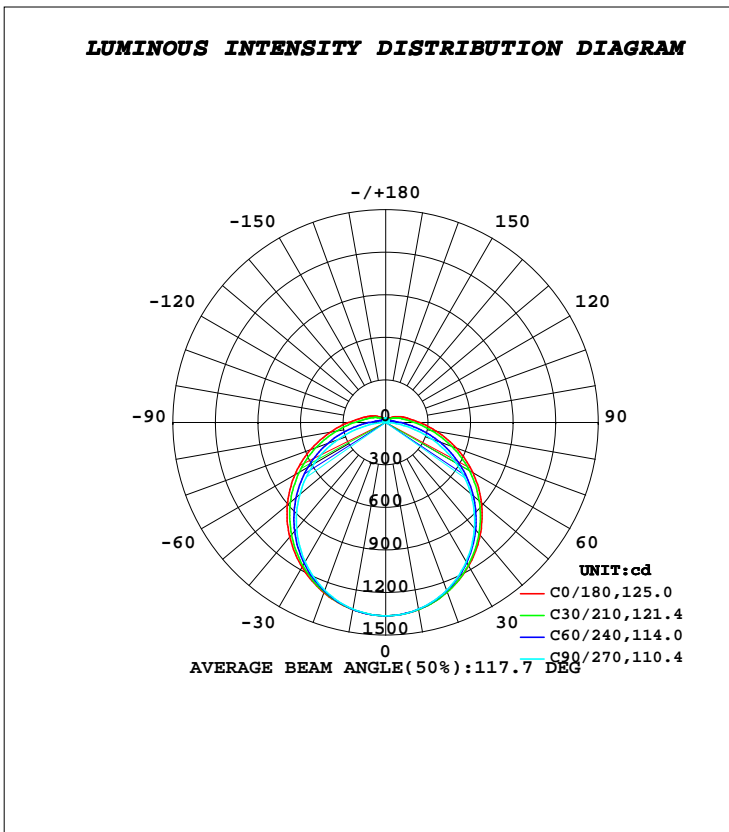


**LUMINAIRE PHOTOMETRIC TEST REPORT**

Test:U:220.30V I:0.1590A P:34.200W PF:0.9730 Freq:50.00Hz		
Lamp Flux:4676.02x1 lm		
NAME: 1.2m-35W	TYPE: LED	
MFR.:		

DATA OF LAMP		PHOTOMETRIC DATA Eff: 136.73 lm/W			
MODEL		I <sub>max</sub> (cd)	1364	S/MH(C0/180)	1.28
NOMINAL POWER(W)	35	LOR(%)	100.0	S/MH(C90/270)	1.24
RATED VOLTAGE(V)	220	TOTAL FLUX(lm)	4676.0	η UP, DN(C0-180)	4.0,45.6
NOMINAL FLUX(lm)	4676.02	CIE CLASS	DIRECT	η UP, DN(C180-360)	4.2,46.2
LAMPS INSIDE	1	η up(%)	8.2	CIBSE SHR NOM	1.25
TEST VOLTAGE(V)	220.3	η down(%)	91.8	CIBSE SHR MAX	1.35



**C Range: 0 - 360DEG**  
**C Interval: 30.0DEG**  
**Test Speed: HIGH**  
**Temperature:25.3DEG**  
**Operators:DAMIN**  
**Test Date:2020-12-07**

**γ Range: 0 - 180DEG**  
**γ Interval: 1.0DEG**  
**Test System:EVERFINE GO-2000A\_V1 SYSTEM V2.00.443**  
**Humidity:65.0%**  
**Test Distance:8.000m [K=0.7063]**  
**Remarks:**

**ZONAL FLUX DIAGRAM**

**ZONAL FLUX DIAGRAM:**

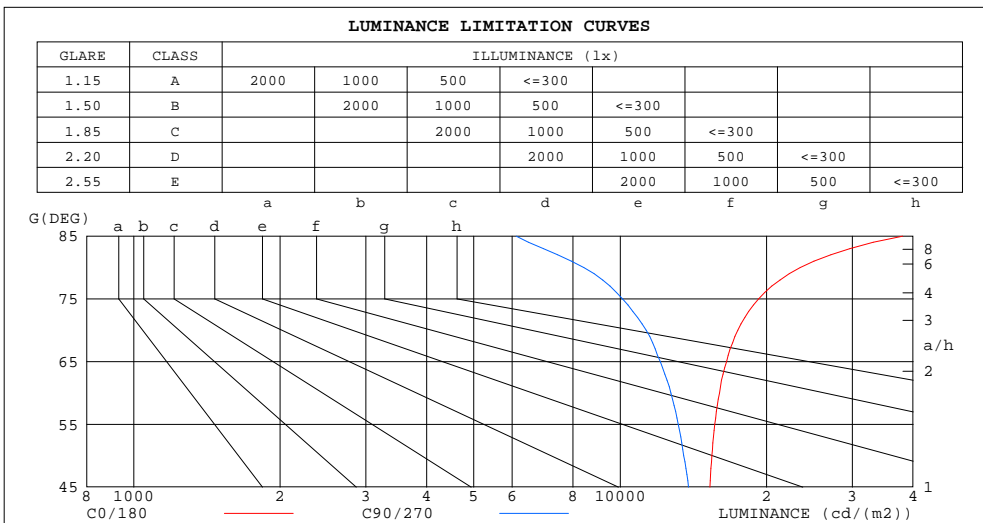
$\gamma$	C0	C45	C90	C135	C180	C225	C270	C315	$\gamma$	$\Phi$ zone	$\Phi$ total	%lum,lamp
10	1340	1339	1337	1339	1341	1339	1337	1338	0- 10	129.0	129.0	2.76,2.76
20	1273	1267	1259	1268	1277	1268	1259	1265	10- 20	369.3	498.2	10.7,10.7
30	1169	1154	1136	1156	1179	1158	1136	1153	20- 30	560.4	1059	22.6,22.6
40	1037	1006	974.6	1012	1054	1017	978.4	1008	30- 40	679.9	1739	37.2,37.2
50	882.7	834.2	784.4	843.7	907.1	852.6	791.3	838.8	40- 50	716.8	2455	52.5,52.5
60	711.3	646.8	573.9	660.0	740.1	670.5	584.4	651.5	50- 60	671.2	3127	66.9,66.9
70	531.1	453.0	349.5	468.9	564.7	481.6	363.9	458.5	60- 70	553.3	3680	78.7,78.7
80	362.3	272.6	132.1	286.8	395.3	299.9	145.0	278.5	70- 80	386.8	4067	87,87
90	240.8	153.0	10.57	158.2	262.7	167.0	13.83	154.3	80- 90	224.1	4291	91.8,91.8
100	165.2	97.12	12.78	99.54	178.9	104.3	14.30	95.49	90-100	131.1	4422	94.6,94.6
110	119.1	66.59	15.46	69.11	129.5	72.52	16.55	63.34	100-110	86.81	4509	96.4,96.4
120	83.60	46.87	18.18	49.50	92.17	51.93	19.08	45.25	110-120	58.34	4567	97.7,97.7
130	56.56	33.48	20.96	37.63	64.13	38.99	21.61	33.00	120-130	38.93	4606	98.5,98.5
140	40.85	28.57	23.86	31.22	44.78	31.78	24.19	28.62	130-140	26.36	4632	99.1,99.1
150	32.16	27.74	26.72	28.83	33.66	28.91	26.86	27.82	140-150	18.71	4651	99.5,99.5
160	29.60	29.14	29.40	29.41	29.82	29.21	29.38	29.17	150-160	13.37	4664	99.8,99.8
170	31.26	31.03	31.49	31.17	31.02	30.87	31.36	31.00	160-170	8.539	4673	99.9,99.9
180	32.16	32.09	32.53	32.22	32.28	32.07	32.50	32.11	170-180	3.011	4676	100,100
DEG	LUMINOUS INTENSITY:cd									UNIT:lm		

**C Range: 0 - 360DEG**  
**C Interval: 30.0DEG**  
**Test Speed: HIGH**  
**Temperature:25.3DEG**  
**Operators:DAMIN**  
**Test Date:2020-12-07**

**$\gamma$  Range: 0 - 180DEG**  
 **$\gamma$  Interval: 1.0DEG**  
**Test System:EVERFINE GO-2000A\_V1 SYSTEM V2.00.443**  
**Humidity:65.0%**  
**Test Distance:8.000m [K=0.7063]**  
**Remarks:**

**LUMINANCE LIMITATION CURVES**

Test:U:220.30V I:0.1590A P:34.200W PF:0.9730 Freq:50.00Hz		
Lamp Flux:4676.02x1 lm		
NAME: 1.2m-35W	TYPE: LED	
MFR.:		



LUMINANCE cd/(m2)		
G(DEG)	C0/180	C90/270
85	38090	6114
80	23462	8423
75	19243	10111
70	17461	11313
65	16539	12092
60	15997	12709
55	15657	13160
50	15442	13510
45	15298	13826

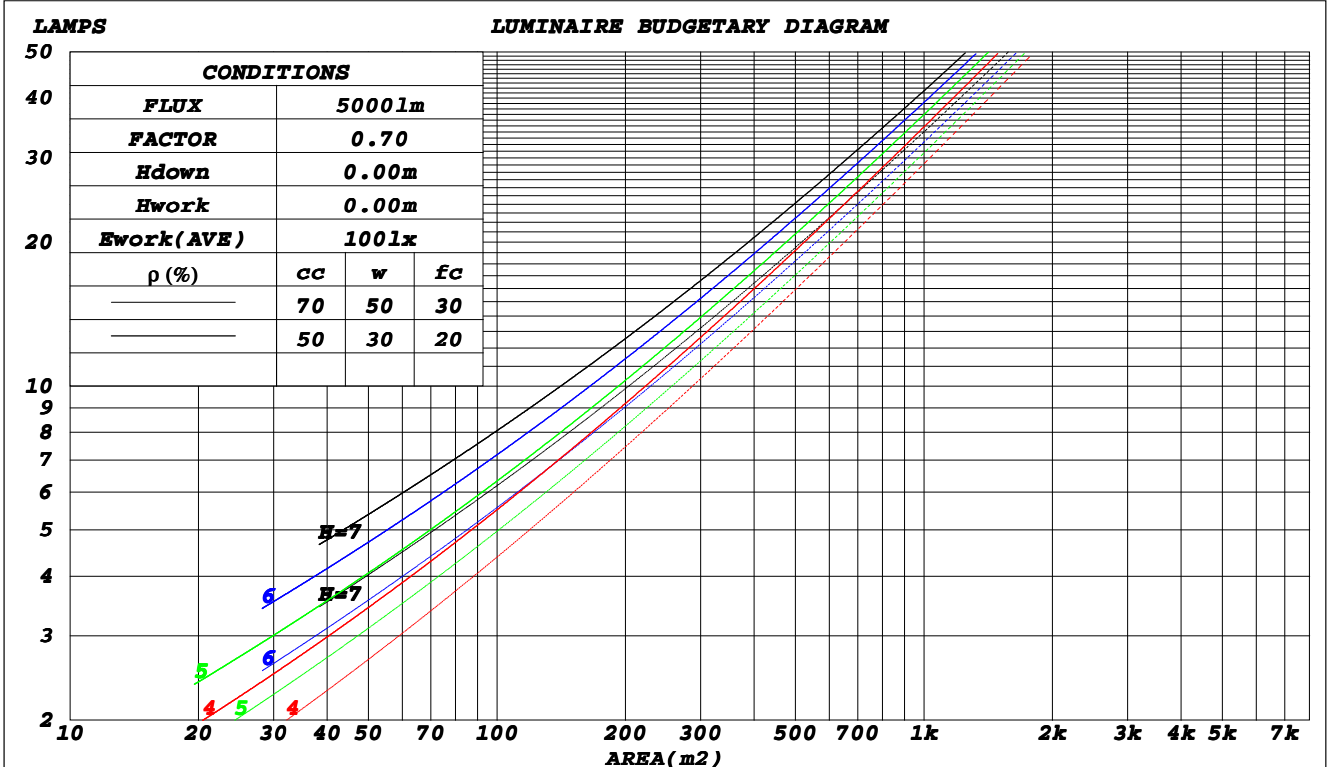
**C Range: 0 - 360DEG**  
**C Interval: 30.0DEG**  
**Test Speed: HIGH**  
**Temperature: 25.3DEG**  
**Operators: DAMIN**  
**Test Date: 2020-12-07**

**γ Range: 0 - 180DEG**  
**γ Interval: 1.0DEG**  
**Test System: EVERFINE GO-2000A\_V1 SYSTEM V2.00.443**  
**Humidity: 65.0%**  
**Test Distance: 8.000m [K=0.7063]**  
**Remarks:**

**CU AND LUMINAIRE BUDGETARY ESTIMATE DIAGRAM**

Test:U:220.30V I:0.1590A P:34.200W PF:0.9730 Freq:50.00Hz		
Lamp Flux:4676.02x1 lm		
NAME: 1.2m-35W	TYPE: LED	
MFR.:		

$\rho_{cc}$	80%			70%			50%			30%			10%			0
$\rho_w$	50%	30%	10%	50%	30%	10%	50%	30%	10%	50%	30%	10%	50%	30%	10%	0
$\rho_{fc}$	20%			20%			20%			20%			20%			0
RCR	RCR:Room Cavity Ratio						Coefficients of Utilization(CU)									
0.0	1.17	1.17	1.17	1.13	1.13	1.13	1.07	1.07	1.07	1.00	1.00	1.00	.94	.94	.94	.92
1.0	.00	.95	.91	.97	.92	.88	.91	.87	.84	.86	.83	.80	.81	.78	.76	.74
2.0	.86	.79	.73	.84	.77	.71	.79	.73	.68	.74	.70	.65	.70	.66	.63	.60
3.0	.75	.67	.60	.73	.65	.59	.69	.62	.57	.65	.59	.55	.61	.57	.53	.50
4.0	.66	.57	.50	.65	.56	.49	.61	.54	.48	.58	.51	.46	.54	.49	.45	.42
5.0	.59	.50	.43	.58	.49	.42	.54	.47	.41	.52	.45	.40	.49	.43	.39	.36
6.0	.53	.44	.37	.52	.43	.37	.49	.42	.36	.47	.40	.35	.44	.38	.34	.32
7.0	.48	.39	.33	.47	.38	.32	.45	.37	.32	.42	.36	.31	.40	.35	.30	.28
8.0	.44	.35	.29	.43	.35	.29	.41	.33	.28	.39	.32	.28	.37	.31	.27	.25
9.0	.40	.32	.26	.39	.31	.26	.37	.30	.25	.36	.29	.25	.34	.28	.24	.22
10.0	.37	.29	.24	.36	.29	.23	.35	.28	.23	.33	.27	.22	.32	.26	.22	.20



C Range: 0 - 360DEG  
 C Interval: 30.0DEG  
 Test Speed: HIGH  
 Temperature: 25.3DEG  
 Operators: DAMIN  
 Test Date: 2020-12-07

$\gamma$  Range: 0 - 180DEG  
 $\gamma$  Interval: 1.0DEG  
 Test System: EVERFINE GO-2000A\_V1 SYSTEM V2.00.443  
 Humidity: 65.0%  
 Test Distance: 8.000m [K=0.7063]  
 Remarks:

**WEC AND CCEC**

Test:U:220.30V I:0.1590A P:34.200W PF:0.9730 Freq:50.00Hz		
Lamp Flux:4676.02x1 lm		
NAME: 1.2m-35W	TYPE: LED	
MFR.:		

$\rho_{cc}$	80%			70%			50%			30%			10%			0
$\rho_w$	50%	30%	10%	50%	30%	10%	50%	30%	10%	50%	30%	10%	50%	30%	10%	0
$\rho_{fc}$	20%			20%			20%			20%			20%			0
<b>RCR</b>	<b>RCR:Room Cavity Ratio</b>						<b>Wall Exitance Coefficients(WEC)</b>									
0.0																
1.0	.348	.198	.063	.339	.193	.061	.320	.184	.059	.304	.175	.056	.288	.167	.054	
2.0	.313	.171	.053	.304	.168	.052	.288	.160	.050	.273	.153	.048	.259	.147	.046	
3.0	.283	.151	.045	.275	.148	.044	.261	.141	.043	.247	.136	.042	.235	.130	.040	
4.0	.258	.134	.039	.251	.131	.039	.238	.126	.038	.226	.121	.037	.215	.117	.036	
5.0	.236	.120	.035	.230	.118	.034	.218	.114	.033	.207	.109	.033	.197	.105	.032	
6.0	.218	.109	.031	.212	.107	.031	.202	.103	.030	.192	.100	.029	.182	.096	.029	
7.0	.202	.100	.028	.197	.098	.028	.187	.095	.027	.178	.091	.027	.170	.088	.026	
8.0	.188	.092	.026	.183	.090	.025	.174	.087	.025	.166	.084	.024	.158	.081	.024	
9.0	.176	.085	.024	.171	.083	.023	.163	.081	.023	.156	.078	.022	.149	.076	.022	
10.0	.165	.079	.022	.161	.078	.022	.153	.075	.021	.147	.073	.021	.140	.070	.020	

$\rho_{cc}$	80%			70%			50%			30%			10%			0
$\rho_w$	50%	30%	10%	50%	30%	10%	50%	30%	10%	50%	30%	10%	50%	30%	10%	0
$\rho_{fc}$	20%			20%			20%			20%			20%			0
<b>RCR</b>	<b>RCR:Room Cavity Ratio</b>						<b>Ceiling Cavity Exitance Coefficients(CCEC)</b>									
0.0																
1.0	.253	.253	.253	.216	.216	.216	.148	.148	.148	.085	.085	.085	.027	.027	.027	
2.0	.239	.196	.159	.204	.168	.138	.140	.116	.096	.081	.068	.056	.026	.022	.018	
3.0	.231	.178	.136	.198	.154	.118	.136	.107	.083	.079	.062	.049	.025	.020	.016	
4.0	.223	.166	.121	.192	.143	.105	.132	.100	.074	.076	.058	.044	.025	.019	.014	
5.0	.216	.155	.111	.185	.134	.096	.128	.094	.068	.074	.055	.040	.024	.018	.013	
6.0	.208	.147	.103	.179	.127	.090	.124	.089	.064	.072	.052	.038	.023	.017	.012	
7.0	.201	.140	.098	.173	.122	.085	.120	.085	.060	.070	.050	.036	.022	.016	.012	
8.0	.195	.135	.093	.168	.117	.081	.116	.082	.058	.068	.048	.034	.022	.016	.011	
9.0	.189	.130	.090	.163	.113	.079	.113	.079	.056	.066	.047	.033	.021	.015	.011	
10.0	.183	.126	.088	.158	.109	.076	.109	.077	.054	.064	.045	.032	.021	.015	.011	

**C Range: 0 - 360DEG**  
**C Interval: 30.0DEG**  
**Test Speed: HIGH**  
**Temperature:25.3DEG**  
**Operators:DAMIN**  
**Test Date:2020-12-07**

**$\gamma$  Range: 0 - 180DEG**  
 **$\gamma$  Interval: 1.0DEG**  
**Test System:EVERFINE GO-2000A\_V1 SYSTEM V2.00.443**  
**Humidity:65.0%**  
**Test Distance:8.000m [K=0.7063]**  
**Remarks:**

**UGR(Unified Glare Rating) Table**

Test:U:220.30V I:0.1590A P:34.200W PF:0.9730 Freq:50.00Hz		
Lamp Flux:4676.02x1 lm		
NAME: 1.2m-35W	TYPE: LED	
MFR.:		

ceiling/cavity	0.7	0.7	0.5	0.5	0.3	0.7	0.7	0.5	0.5	0.3
walls	0.5	0.3	0.5	0.3	0.3	0.5	0.3	0.5	0.3	0.3
working plane	0.2	0.2	0.2	0.2	0.2	0.2	0.2	0.2	0.2	0.2
Room dimensions	Viewed crosswise					Viewed endwise				
<b>x = 2H y = 2H</b>	<b>22.0</b>	<b>23.5</b>	<b>22.4</b>	<b>23.8</b>	<b>24.2</b>	<b>21.1</b>	<b>22.6</b>	<b>21.5</b>	<b>22.9</b>	<b>23.3</b>
3H	24.1	25.4	24.5	25.8	26.2	22.6	23.9	23.0	24.3	24.7
4H	25.1	26.4	25.5	26.8	27.2	23.2	24.4	23.6	24.8	25.3
6H	26.2	27.4	26.6	27.8	28.2	23.5	24.7	24.0	25.2	25.6
8H	26.7	27.9	27.2	28.3	28.8	23.6	24.8	24.1	25.2	25.7
12H	27.4	28.5	27.9	29.0	29.4	23.7	24.8	24.1	25.2	25.7
<b>4H 2H</b>	<b>22.6</b>	<b>23.9</b>	<b>23.0</b>	<b>24.3</b>	<b>24.7</b>	<b>21.9</b>	<b>23.2</b>	<b>22.3</b>	<b>23.6</b>	<b>24.0</b>
3H	24.9	26.0	25.3	26.4	26.9	23.6	24.7	24.1	25.1	25.6
4H	26.1	27.1	26.5	27.5	28.1	24.3	25.3	24.8	25.8	26.3
6H	27.3	28.2	27.8	28.7	29.3	24.8	25.8	25.4	26.2	26.8
8H	28.0	28.9	28.5	29.4	29.9	25.0	25.9	25.5	26.4	26.9
12H	28.8	29.6	29.3	30.1	30.7	25.1	25.9	25.6	26.4	27.0
<b>8H 4H</b>	<b>26.3</b>	<b>27.2</b>	<b>26.9</b>	<b>27.7</b>	<b>28.3</b>	<b>24.9</b>	<b>25.7</b>	<b>25.4</b>	<b>26.2</b>	<b>26.8</b>
6H	27.9	28.6	28.4	29.1	29.7	25.6	26.3	26.2	26.9	27.5
8H	28.7	29.4	29.3	29.9	30.6	25.9	26.6	26.5	27.1	27.8
12H	29.8	30.3	30.4	30.9	31.6	26.2	26.7	26.8	27.3	28.0
<b>12H 4H</b>	<b>26.4</b>	<b>27.1</b>	<b>26.9</b>	<b>27.7</b>	<b>28.3</b>	<b>25.0</b>	<b>25.8</b>	<b>25.5</b>	<b>26.3</b>	<b>26.9</b>
6H	28.0	28.6	28.5	29.2	29.8	25.9	26.5	26.5	27.1	27.7
8H	28.9	29.5	29.5	30.1	30.7	26.3	26.9	26.9	27.4	28.1
<b>Variations with the observer position at spacings(CIE Pub.117):</b>										
<b>S = 1.0H</b>	<b>+ 0.1 / - 0.1</b>					<b>+ 0.1 / - 0.2</b>				
<b>1.5H</b>	<b>+ 0.2 / - 0.3</b>					<b>+ 0.2 / - 0.3</b>				
<b>2.0H</b>	<b>+ 0.2 / - 0.3</b>					<b>+ 0.1 / - 0.4</b>				

CIE Pub.117, 4676 lm Total Lamp Luminous Flux Corrected (8log(F/F0) = 5.4)  
 Area: 0.09 m2

**C Range: 0 - 360DEG**  
**C Interval: 30.0DEG**  
**Test Speed: HIGH**  
**Temperature:25.3DEG**  
**Operators:DAMIN**  
**Test Date:2020-12-07**

**γ Range: 0 - 180DEG**  
**γ Interval: 1.0DEG**  
**Test System:EVERFINE GO-2000A\_V1 SYSTEM V2.00.443**  
**Humidity:65.0%**  
**Test Distance:8.000m [K=0.7063]**  
**Remarks:**

**UTILIZATION FACTORS TABLE**

Test:U:220.30V I:0.1590A P:34.200W PF:0.9730 Freq:50.00Hz Lamp Flux:4676.02x1 lm		
NAME: 1.2m-35W	TYPE: LED	
MFR.:		

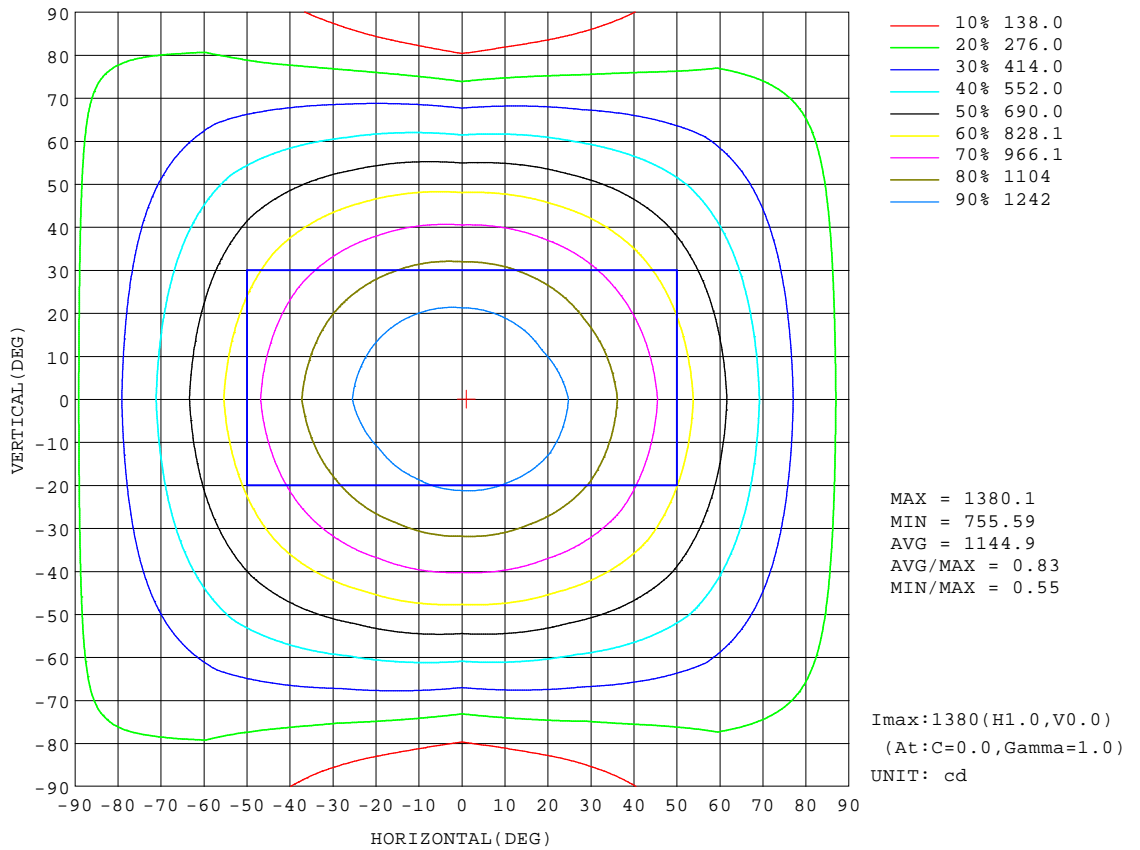
REFLECTANCE										
Ceiling	0.8	0.8	0.8	0.7	0.7	0.7	0.5	0.5	0.5	0
Walls	0.7	0.5	0.3	0.7	0.5	0.3	0.7	0.5	0.3	0
Working plane	0.2	0.2	0.2	0.2	0.2	0.2	0.2	0.2	0.2	0
<b>ROOM INDEX</b>	<b>UTILIZATION FACTORS(PERCENT) <math>k(RI) \times RCR = 5</math></b>									
<b>k = 0.60</b>	53	41	34	52	41	34	51	40	33	27
<b>0.80</b>	63	50	43	61	50	42	59	49	42	34
<b>1.00</b>	71	59	51	69	58	50	66	59	50	42
<b>1.25</b>	78	66	58	76	65	58	72	63	57	48
<b>1.50</b>	83	72	64	81	70	63	77	68	62	53
<b>2.00</b>	90	80	73	87	78	72	83	75	69	60
<b>2.50</b>	94	85	78	91	83	77	86	80	74	64
<b>3.00</b>	97	89	83	95	87	81	89	83	78	68
<b>4.00</b>	102	95	89	99	93	87	93	88	84	72
<b>5.00</b>	104	99	94	101	96	92	95	91	87	76
<b>ROOM INDEX</b>	<b>UF(total)</b>									<b>Direct</b>
<b>According to DIN EN 13032-2 2004</b>			<b>Suspended</b>				<b>SHRNM = 1.25</b>			

**C Range: 0 - 360DEG**  
**C Interval: 30.0DEG**  
**Test Speed: HIGH**  
**Temperature:25.3DEG**  
**Operators:DAMIN**  
**Test Date:2020-12-07**

**$\gamma$  Range: 0 - 180DEG**  
 **$\gamma$  Interval: 1.0DEG**  
**Test System:EVERFINE GO-2000A\_V1 SYSTEM V2.00.443**  
**Humidity:65.0%**  
**Test Distance:8.000m [K=0.7063]**  
**Remarks:**

**ISOCANDELA DIAGRAM**

Test:U:220.30V I:0.1590A P:34.200W PF:0.9730 Freq:50.00Hz		
Lamp Flux:4676.02x1 lm		
NAME: 1.2m-35W	TYPE: LED	
MFR.:		



**C Range: 0 - 360DEG**  
**C Interval: 30.0DEG**  
**Test Speed: HIGH**  
**Temperature:25.3DEG**  
**Operators:DAMIN**  
**Test Date:2020-12-07**

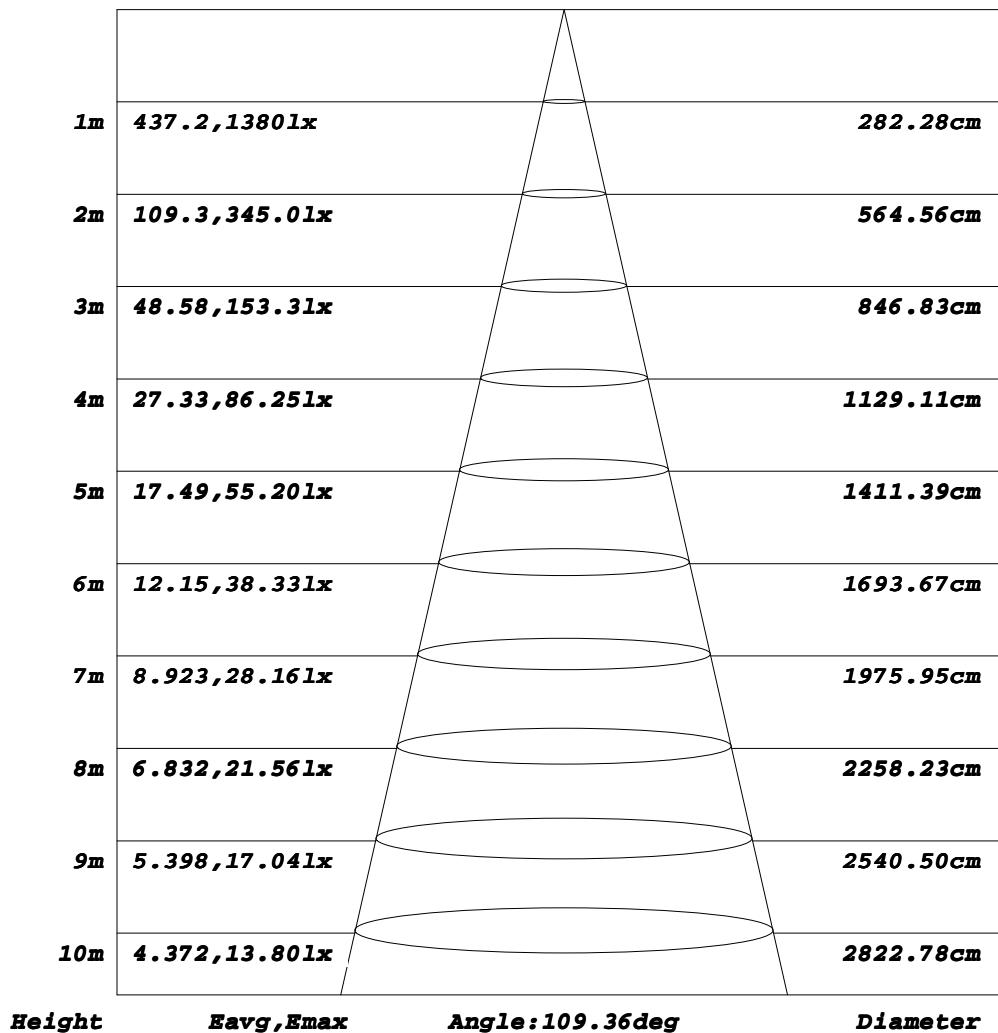
**γ Range: 0 - 180DEG**  
**γ Interval: 1.0DEG**  
**Test System:EVERFINE GO-2000A\_V1 SYSTEM V2.00.443**  
**Humidity:65.0%**  
**Test Distance:8.000m [K=0.7063]**  
**Remarks:**



**AAI Figure**

Test:U:220.30V I:0.1590A P:34.200W PF:0.9730 Freq:50.00Hz		
Lamp Flux:4676.02x1 lm		
NAME: 1.2m-35W	TYPE: LED	
MFR.:		

**Flux out:2802 lm**



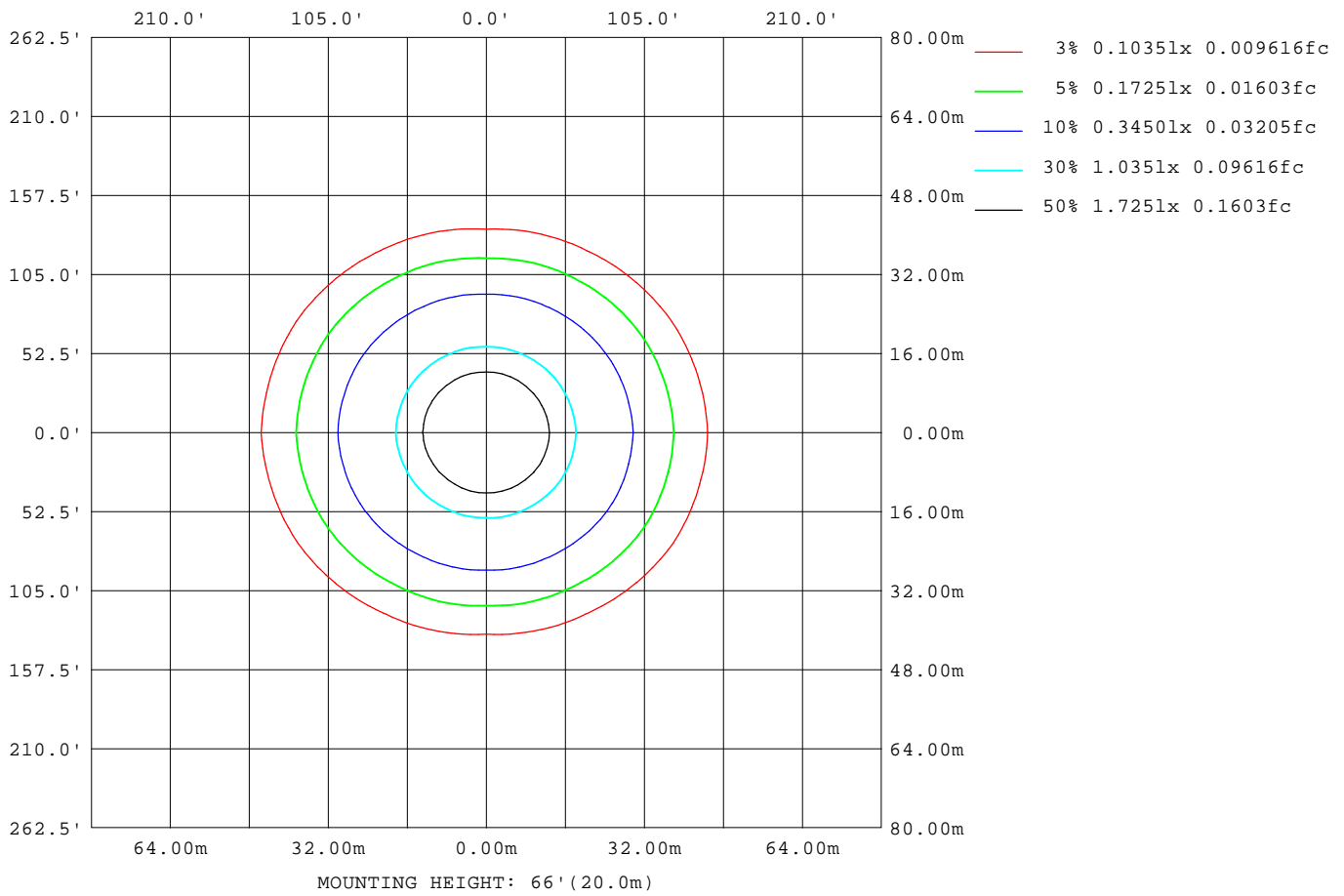
Note: The Curves indicate the illuminated area and the average illumination when the luminaire is at different distance.

**C Range: 0 - 360DEG**  
**C Interval: 30.0DEG**  
**Test Speed: HIGH**  
**Temperature: 25.3DEG**  
**Operators: DAMIN**  
**Test Date: 2020-12-07**

**γ Range: 0 - 180DEG**  
**γ Interval: 1.0DEG**  
**Test System: EVERFINE GO-2000A\_V1 SYSTEM V2.00.443**  
**Humidity: 65.0%**  
**Test Distance: 8.000m [K=0.7063]**  
**Remarks:**

**ISOLUX DIAGRAM**

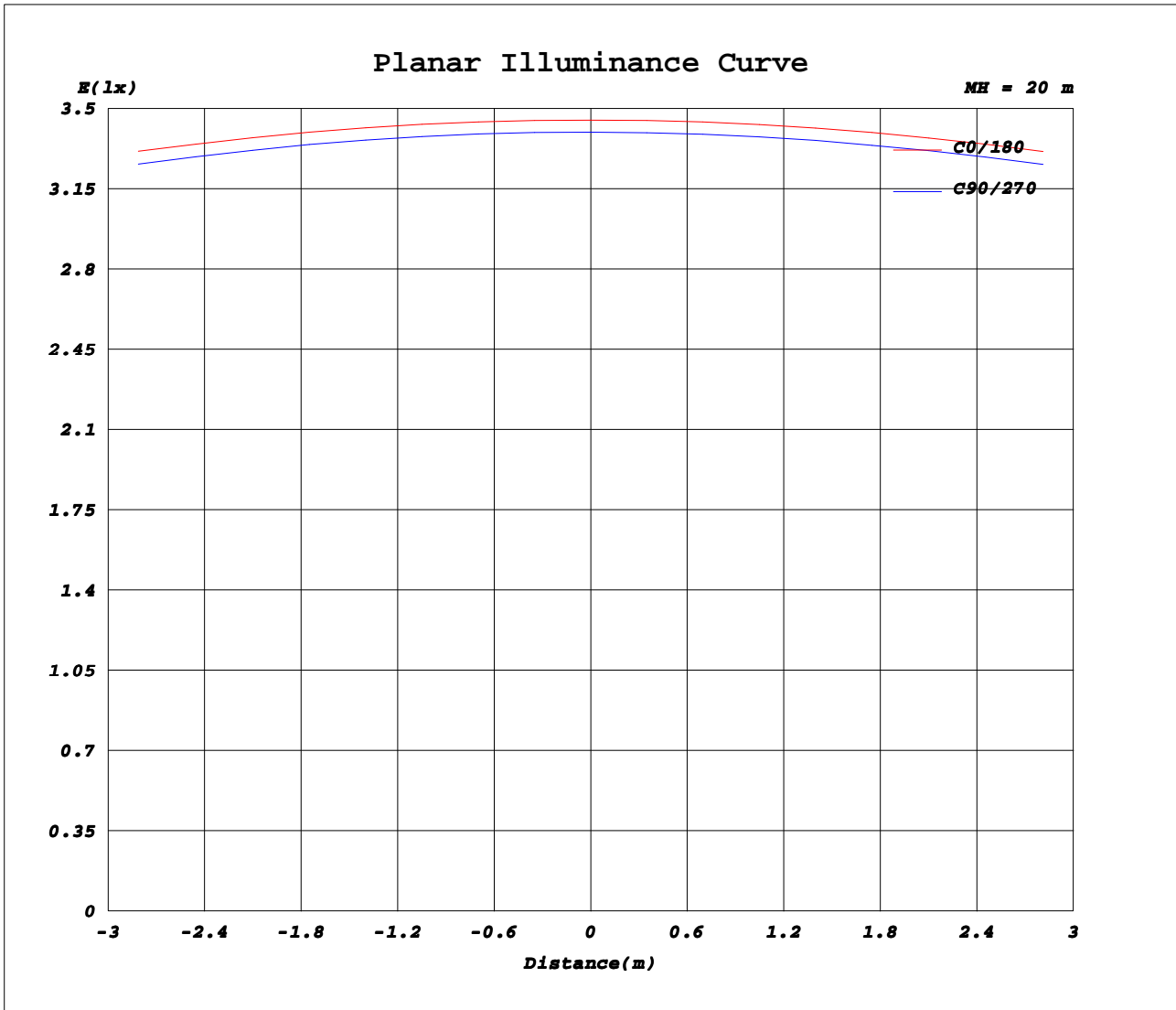
Test:U:220.30V I:0.1590A P:34.200W PF:0.9730 Freq:50.00Hz		
Lamp Flux:4676.02x1 lm		
NAME: 1.2m-35W	TYPE: LED	
MFR.:		



**C Range: 0 - 360DEG**  
**C Interval: 30.0DEG**  
**Test Speed: HIGH**  
**Temperature: 25.3DEG**  
**Operators: DAMIN**  
**Test Date: 2020-12-07**

**γ Range: 0 - 180DEG**  
**γ Interval: 1.0DEG**  
**Test System: EVERFINE GO-2000A\_V1 SYSTEM V2.00.443**  
**Humidity: 65.0%**  
**Test Distance: 8.000m [K=0.7063]**  
**Remarks:**

**Planar Illuminance Curve**



**C Range: 0 - 360DEG**  
**C Interval: 30.0DEG**  
**Test Speed: HIGH**  
**Temperature: 25.3DEG**  
**Operators: DAMIN**  
**Test Date: 2020-12-07**

**γ Range: 0 - 180DEG**  
**γ Interval: 1.0DEG**  
**Test System: EVERFINE GO-2000A\_V1 SYSTEM V2.00.443**  
**Humidity: 65.0%**  
**Test Distance: 8.000m [K=0.7063]**  
**Remarks:**

**LUMINOUS DISTRIBUTION INTENSITY DATA**

Test:U:220.30V I:0.1590A P:34.200W PF:0.9730 Freq:50.00Hz		
Lamp Flux:4676.02x1 lm		
NAME: 1.2m-35W	TYPE: LED	
MFR.:		

Table--1

UNIT: cd

C (DEG) \ γ (DEG)	0	30	60	90	120	150	180	210	240	270	300	330							
0	1364	1364	1364	1364	1364	1364	1364	1364	1364	1364	1364	1364							
5	1358	1357	1357	1357	1357	1357	1358	1357	1358	1356	1357	1357							
10	1340	1340	1337	1337	1337	1340	1341	1340	1339	1337	1338	1338							
15	1311	1312	1306	1305	1306	1312	1314	1311	1308	1304	1307	1308							
20	1273	1272	1262	1259	1262	1273	1277	1272	1265	1259	1263	1267							
25	1225	1224	1207	1202	1207	1225	1232	1225	1212	1202	1209	1218							
30	1169	1164	1143	1136	1144	1168	1179	1168	1149	1136	1145	1160							
35	1106	1098	1068	1059	1071	1104	1120	1104	1078	1061	1073	1095							
40	1037	1024	987	975	991	1033	1054	1034	1000	978	993	1023							
45	962	946	899	883	905	956	983	959	915	888	908	944							
50	883	861	807	784	813	874	907	878	827	791	817	860							
55	799	774	710	682	718	789	824	793	732	690	720	773							
60	711	683	610	574	619	701	740	706	635	584	621	682							
65	622	591	509	462	519	610	653	616	536	476	519	591							
70	531	498	408	349	418	519	565	526	437	364	418	499							
75	443	407	310	236	320	429	477	436	338	252	321	408							
80	362	326	219	132	228	346	395	352	248	145	231	326							
85	295	257	148	48.1	152	273	324	278	170	58.0	156	257							
90	241	204	102	10.6	102	214	263	219	115	13.8	106	203							
95	197	164	74.6	11.5	74.1	171	215	175	82.2	13.3	76.2	163							
100	165	136	58.5	12.8	58.0	141	179	144	64.3	14.3	56.6	134							
105	140	113	47.1	14.1	46.5	119	152	122	51.5	15.4	43.3	111							
110	119	95.1	37.9	15.5	38.5	99.7	129	102	42.6	16.6	37.7	89.0							
115	100	79.4	30.8	16.8	32.9	83.5	109	85.9	36.2	17.8	30.5	74.5							
120	83.6	66.3	27.4	18.2	29.2	69.9	92.2	71.9	31.9	19.1	27.6	62.9							
125	69.1	52.8	25.3	19.5	26.8	58.7	77.1	60.3	28.9	20.3	25.7	50.8							
130	56.6	42.6	24.3	21.0	25.6	49.6	64.1	50.8	27.1	21.6	24.7	41.3							
135	47.8	36.4	24.1	22.4	25.2	42.5	53.6	43.3	26.2	22.9	24.5	35.3							
140	40.8	32.6	24.6	23.9	25.3	37.1	44.8	37.6	25.9	24.2	24.9	32.3							
145	35.6	30.1	25.4	25.3	25.9	33.4	38.3	33.5	26.2	25.5	25.7	30.0							
150	32.2	28.9	26.6	26.7	26.9	30.8	33.7	30.9	26.9	26.9	26.8	28.9							
155	30.1	28.7	27.8	28.1	28.1	29.6	30.7	29.5	28.0	28.2	28.0	28.7							
160	29.6	29.2	29.0	29.4	29.3	29.5	29.8	29.3	29.2	29.4	29.1	29.2							
165	30.2	30.1	30.2	30.6	30.5	30.2	30.1	29.8	30.2	30.5	30.2	30.1							
170	31.3	30.9	31.1	31.5	31.4	31.0	31.0	30.6	31.1	31.4	31.2	30.8							
175	31.8	31.4	31.7	32.0	31.9	31.5	31.8	31.4	31.9	32.1	32.0	31.4							
180	32.2	31.9	32.2	32.5	32.4	32.1	32.3	31.9	32.2	32.5	32.4	31.8							

**C Range: 0 - 360DEG**  
**C Interval: 30.0DEG**  
**Test Speed: HIGH**  
**Temperature:25.3DEG**  
**Operators:DAMIN**  
**Test Date:2020-12-07**

**γ Range: 0 - 180DEG**  
**γ Interval: 1.0DEG**  
**Test System:EVERFINE GO-2000A\_V1 SYSTEM V2.00.443**  
**Humidity:65.0%**  
**Test Distance:8.000m [K=0.7063]**  
**Remarks:**